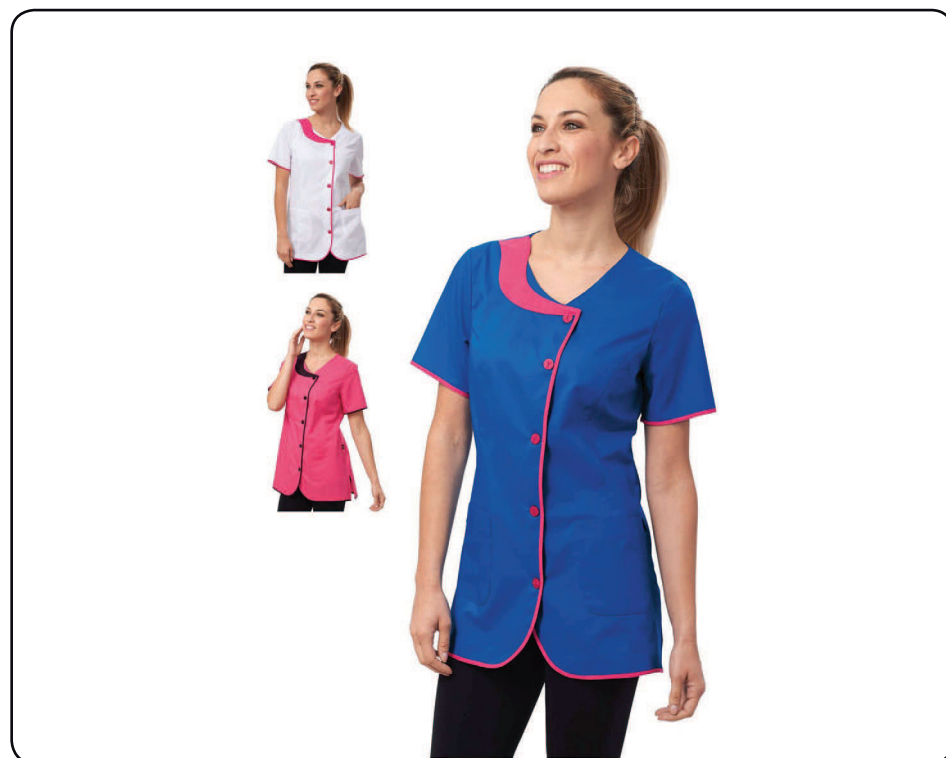


CASACCA M/M DORA

HORECA / HORECA

TUNIC



CODICE / CODE

28CS1306/00-0001

TESSUTO PRINCIPALE / MAIN FABRIC

65% POLIESTERE 35% COTONE GR/MQ.
130
65% POLYESTER 35% COTTON GR/MQ.
130

GAMMA TAGLIE / SIZE RANGE

XS-3XL

CERTIFICAZIONI / CERTIFICATION

CE UNI EN ISO 13688

MANUTENZIONE / MAINTENANCE



VARIANTI COLORI / COLOR VARIANTS



DESCRIZIONE / DESCRIPTION:

- Abbottonatura con bottoni e occhielli
- Tasche davanti
- Spacchi laterali
- Pinces dietro
- Tagli sagomati
- Tessuto in contrasto su girocollo davanti
- Profilo in tessuto a contrasto lungo l'apertura, maniche e fondo capo.

- Closure with buttons and relative buttonholes
- Front pockets
- Lateral vents
- Back darts
- Shaped cuts
- Contrasting fabric on the front crew-neck
- Contrasting fabric profile along the opening, sleeves and bottom.

	XS	S	M	L	XL	XXL	3XL	Tol. ±
BB lunghezza totale TOTAL LENGTH	74.00	75.50	78.50	81.50	84.50	84.50	84.50	1
CA lunghezza manica SLEEVE LENGTH	22.00	22.50	23.50	24.50	25.50	25.50	25.50	1
DA meta' circonferenza torace CHEST HALF CIRCUMFERENCE	50.50	52.00	55.00	59.00	63.50	67.50	72.00	1

